

Vitagraph Film Exchange Building

1703 Wyandotte, Kansas City, Missouri



Class A Office Space Available For Lease

3rd Floor - 7,331 RSF Available (divisible)

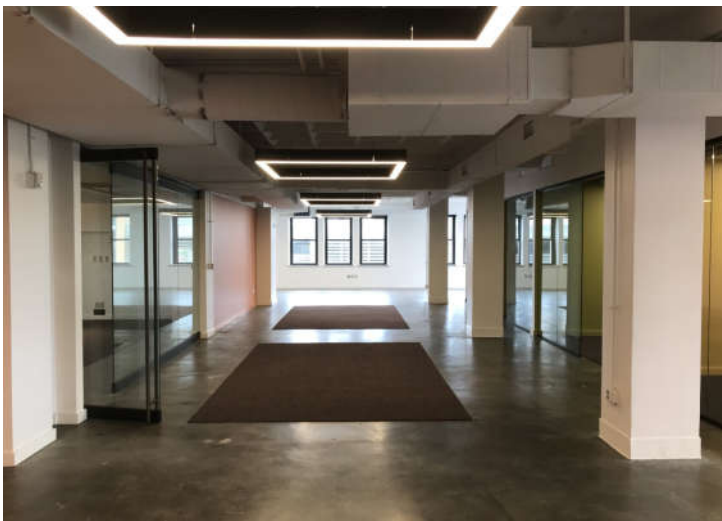
- Premier Crossroads location near Performing Arts Center
- Parking in Adjacent Surface Parking, Attached Heated Garage, or Webster House Garage
- Shaded Roof Deck for Tenant Use
- Secure Storage Available in Lower Level
- LEED Gold Building
- \$24.50 / RSF - Full Service Lease Rate



Peter T. Lacy, CRE, CCIM
913-236-7000

Vitagraph Film Exchange Building

1703 Wyandotte, Kansas City, Missouri



Information furnished regarding property is from sources deemed reliable, but no warranty or representation is made as to the accuracy thereof and same is submitted subject to errors, omissions, prior sale or lease or withdrawal, without notice.

Vitagraph Film Exchange Building

1703 Wyandotte, Kansas City, Missouri



LOCATION

Located in the heart of the Crossroads Arts District of Kansas City, Missouri, The Vitagraph Building is just one block from Kauffman Center for the Performing Arts, Bartle Hall, and the new Loews Convention Center Hotel. It is two blocks from the Kansas City Streetcar line that runs between the River Market, Downtown, and Union Station. This location has great access to all parts of the metropolitan area via nearby I-35 and I-70.

Information furnished regarding property is from sources deemed reliable, but no warranty or representation is made as to the accuracy thereof and same is submitted subject to errors, omissions, prior sale or lease or withdrawal, without notice.

