

# Columbia Pictures Building

214 West 18th Street, Kansas City, Missouri



## Office Building For Lease

First Floor - 2,250 RSF

2nd Floor - 2,366 RSF

Connecting Space - 1,528 RSF

- Nine Parking Spaces in Adjacent Surface Parking Lot
- Covered Parking Available in Nearby Webster Garage
- Negotiable Tenant Improvement Allowance
- Full Renovation and Lease Opportunity
- Building Signage Available
- \$22.00—\$25.00 / RSF plus Utilities



Peter T. Lacy, CRE, CCIM  
913-236-7000

# Columbia Pictures Building

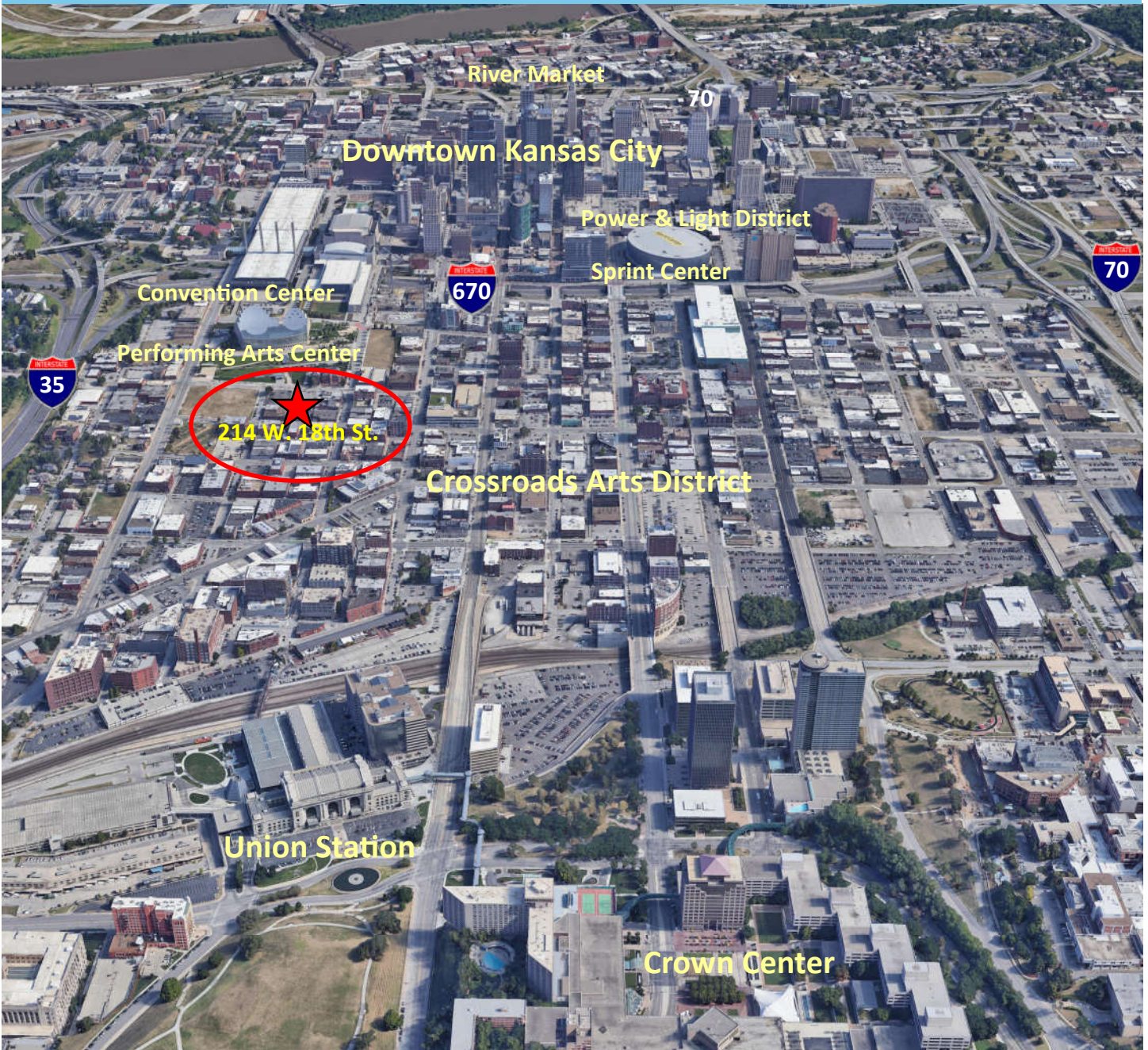
214 West 18th Street, Kansas City, Missouri



Information furnished regarding property is from sources deemed reliable, but no warranty or representation is made as to the accuracy thereof and same is submitted subject to errors, omissions, prior sale or lease or withdrawal, without notice.

# Columbia Pictures Building

214 West 18th Street, Kansas City, Missouri



## LOCATION

Located in the heart of the Crossroads Arts District of Kansas City, Missouri, The Columbia Pictures Building is walking distance to The Kauffman Center for the Performing Arts, Bartle Hall, and the new Loews Convention Center Hotel. It is two blocks from the Kansas City Streetcar line that runs between the River Market, Downtown, and Union Station. This location has great access to all parts of the metropolitan area via nearby I-35 and I-70.

Information furnished regarding property is from sources deemed reliable, but no warranty or representation is made as to the accuracy thereof and same is submitted subject to errors, omissions, prior sale or lease or withdrawal, without notice.